

DG-3000E Installation Steps

Welcome to buy our DG-3000E Continuous Electromagnetic Induction Aluminum Foil Sealing Machine.

Standard configuration: one main unit, one heating sensor, one cart and a number of accessories. A total of two wooden carton packaging.

1. Open the carton with cart and accessories. All items are shown in the following figure:



1. Install the four castors in the four nuts on the bottom of the cart.



Install the base holder.

Find the longest four screws in the kit. Insert the bracket into the bottom of the cart (the bracket needs to be installed on the side with four holes on the side, that is, the side opposite to the cart door), and adjust the support screws to make the bracket roughly horizontal to facilitate the installation of the screws.



The four holes in the holder are respectively aligned with the four holes in the bottom of the cart. Four screws are inserted into the holes and tightened with a wrench in the part bag. Adjust the support screw so that the holder is firmly supported on the ground. Note that the cart holder must be installed first, otherwise the cart will be dumped.



Installation of lifting frame brackets.

Secure the bracket with four sets of screws without nuts in the four holes on the side of the cart. Adjust the level and tighten with a wrench. Note that the plane with two openings is upward.



The installation of the lifting frame.

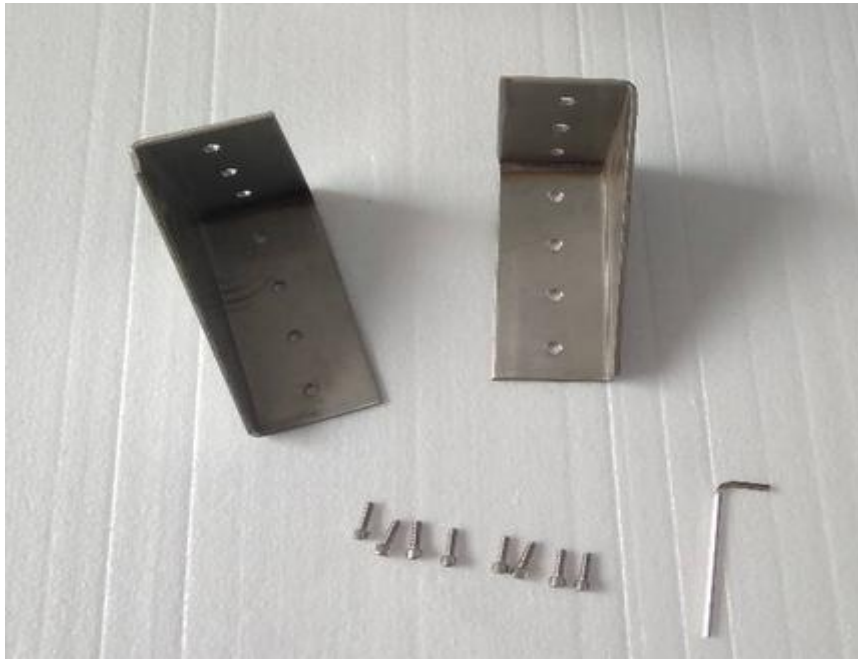
Place one side of the lifting frame with four holes on the bracket, align it with the hole, and fasten with the matching screws.





1. Sensor head bracket installation.

The sensor head bracket has four holes on one side and is mounted on the middle plate of the lifting frame. Each bracket is fixed with 2 socket head cap screws. Be careful not to tighten the Allen screw first.



The installation of the heating sensor.

Pull the sensor head out and lift the two people up. Adjust the position of the sensor head bracket. Use the four hexagon socket screws (2 on each side) to mount the sensor head horizontally on the sensor head bracket. Use an Allen key to tighten the screw. After the sensor head is mounted, tighten the four socket head screws on the sensor head bracket.



Installation of lifting frame handle.

Use the longest hexagon socket screw to fix the handle on the middle screw of the lifting frame with an Allen key. Rotate the handle to check if the lifter can move smoothly. If it is difficult to lift, use a large Allen wrench to adjust the Hexagon socket screws on both sides of the handle until it moves smoothly.



The main unit connection.

The two data interfaces of the sensor head are respectively connected to the output and control lines of the main unit.



At this point, the installation of the DG-3000E continuous electromagnetic induction foil sealer was completed.

Power on the main unit, adjust the relevant parameters until the sealer is suitable for your company's production.

Thank you again for choosing our products. Thank you!