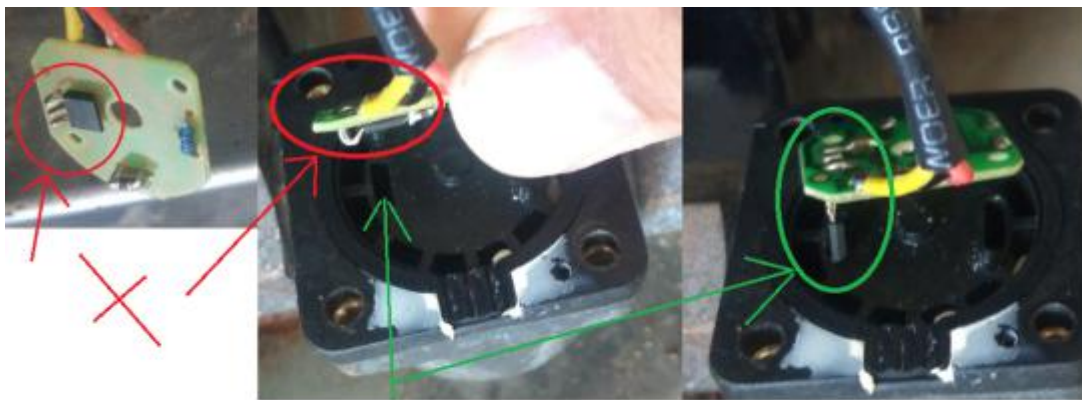


If the water flow is small, it may be that the flowmeter impeller is blocked by debris and the rotation is not smooth. Need to clean the flowmeter impeller. Power off FIRST, then use a screwdriver to remove the four screws on the water flowmeter, separate the black plastic part from the metal part, and take out the flowmeter impeller for cleaning. After cleaning, put it back. Note that the middle clip of the two plastic clips cannot be removed, and there is a circuit board inside. If you accidentally disassemble it, you must not wet the board. After cleaning the flowmeter impeller, the components of the circuit board need to put back as they were. The erected test board must be inserted into the small slot to detect the flow as the picture shows.



**Note: Operation after power off . The circuit board between the two black plastic sheets cannot be removed, and the circuit board must not be wetted. After cleaning the flowmeter impeller, the components of the circuit board need to put as they were**

**The erected test board must be inserted into the small slot to detect the flow as the picture shows**